

# **Application Note** Barcode Support

(VS-500) Version 1.2

**Table of Contents**

- 1 What do you need? ..... 3
- 2 Setup ..... 4
  - 2.1 Barcode scanner connection..... 4
  - 2.2 Setup barcode table (Barcode.ini) ..... 4

## 1 What do you need?

Before you set up Barcode scanner support on the ViewStream 500 please make sure you have the following parts:

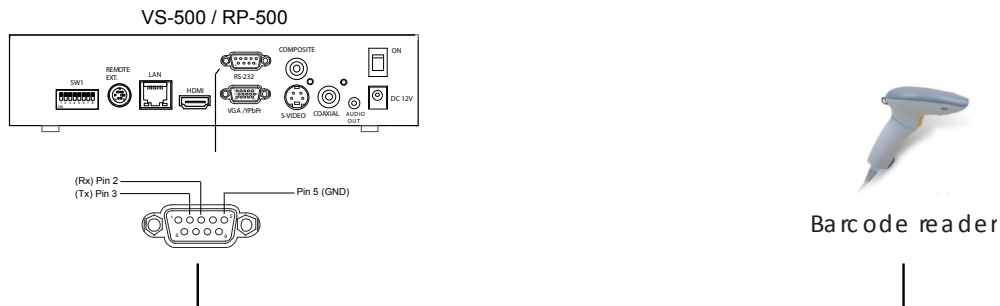
- Barcode scanner with RS-232 interface
- ViewStream 500 (VS-500)
- Power supply (DC12V)
- DV Studio

DV Studio can be downloaded from: <http://www.dvsignage.com/using-dv-studio>

## 2 Setup

### 2.1 Barcode scanner connection

- Connect the barcode scanner direct to the RS-232 port on the RS-232 port of VS-500.
- If the scanner requires an external power supply, make sure the proper power supply is connected into the power socket of the scanner.



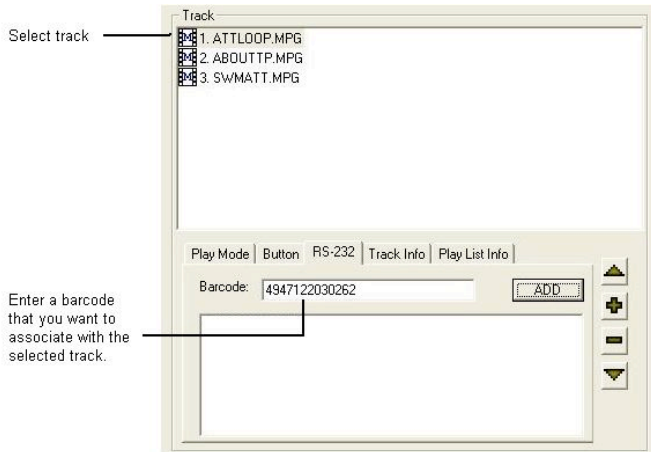
### 2.2 Setup barcode table (Barcode.ini)

To be able to use barcodes the media players need a lookup table. This section describes how to use DV Studio Plus to create the barcode lookup table (Barcode.ini) that will later be copied across to the media player. The software requires DV Studio plus version 1.4.023.03 or later. The barcode function applies to all ViewStream models with an RS-232 port.

In DV Studio, click the **RS-232** tab to open barcode input window.



Select a specific track, and then enter a barcode in the **Barcode** field. The code can be Alpha-numeric type, but the maximum character length cannot exceed 14 characters.



### **Add barcode item**

Click **Add** to insert the barcode item in the table.



### **Delete barcode item**

Select the barcode item that you want to delete. (Now the **Add** button will change to **Delete** button.)

Click **Delete** button to remove the barcode item.

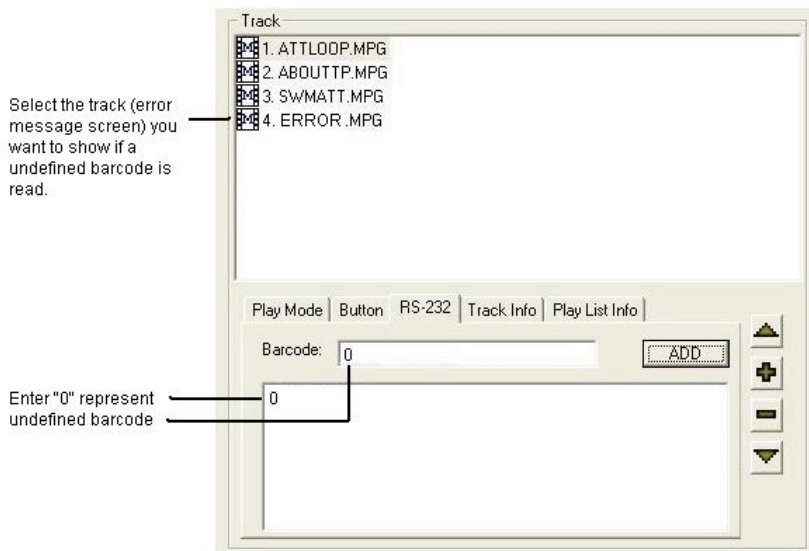


## **Barcode not found**

If the scanned barcode was not found in the barcode table, you may want to define it to jump to an “Undefined Barcode Track”

Select the “Undefined Barcode Track” you want to show when the scanned barcode was not found. (e.g. ATTLOOP.MPG)

Enter “0” in the barcode field, then click **Add** to insert it in the table.



The above example will jump to the track (ATTLOOP.MPG) for any barcodes that were not found in the barcode table.

## **Barcode.ini**

After you have defined all barcodes and tracks in DV Studio Plus, a **Barcode.ini** file will be created. This is an editable text file and it is possible to modify for adding or deleting any barcode item later.

```
[Barcode]
BC1=2002072411119
BC2=2002072411126
BC3=2002072411133
BC4=2002072411140
BC5=2002072411157
BC6=2002072411164
BC7= 0

BC1 [2002072411119]
    playlist=0
    track=3
BC2 [2002072411126]
    playlist=0
    track=4
BC3 [2002072411133]
    playlist=0
    track=5
BC4 [2002072411140]
    playlist=0
    track=6
BC5 [2002072411157]
    playlist=0
    track=7
BC6 [2002072411164]
    playlist=0
    track=8
BC7 [0]
    playlist=0
    track=9
```

Referring to the same  
playlist (the 1st playlist)

---

## CONTACT DETAILS

**USA:** 18440 Technology Drive  
Building 130  
Morgan Hill, CA 95037

**Tel:** (1) 408-782 7773  
**Sales:** info@dvsignage.com

**Fax:** (1) 408-782 7883

**EUROPE:** The Lake House,  
Knebworth Park,  
Hertfordshire, SG3 6PY  
UK

**Tel:** +44 (0)20 7631 2150  
**Sales:** info@dvsignage.com

**Fax:** +44 (0)20 7631 2156

**ASIA:** 16<sup>th</sup> floor Millennium City 3  
370 Kwun Tong Road  
Kwun Tong  
Hong Kong

**Tel:** (852) 2861 3615  
**Sales:** hk@dvsignage.com

**Fax:** (852) 2520 2987