

Application Note Barcode Support

(VS-700) Version 1.2

Table of Contents

1	What do you need?	2
2	Setup	3
2.1	Barcode scanner connection	3
2.2	Setup barcode table (Barcode.ini)	3
3	Copying files on the VS-450	7
3.1	Preparation	7
3.2	USB upload.....	8
3.3	UPDATE.INI.....	10

1 What do you need?

Before you set up Barcode scanner support on the ViewStream 700, please make sure you have the following parts:

- Barcode scanner with RS-232 interface
- ViewStream 700 (VS-700)
- Power supply (DC19V)
- DV Studio*
- Update.ini*

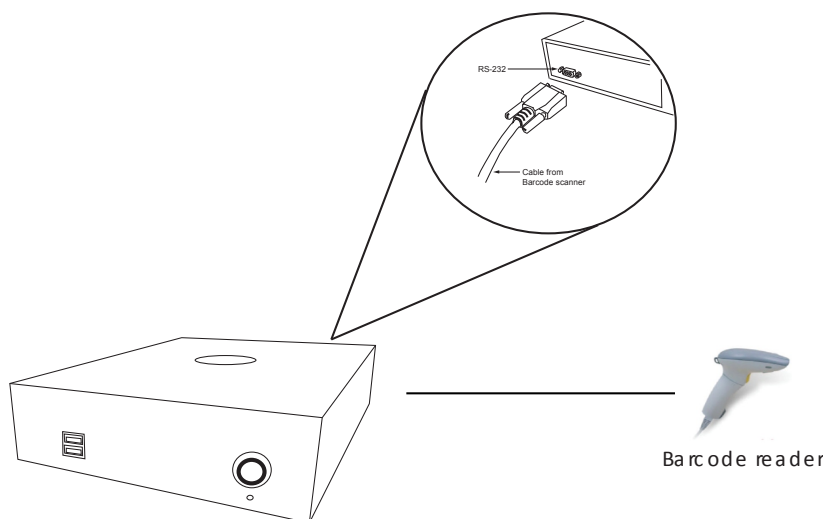
Note:

*The UPDATE.INI can be created by a software tool – “USBupdateX.xx.exe”. Both DV Studio and update.ini software tool can be downloaded from www.dvsignage.com/using-dv-studio

2 Setup

2.1 Barcode scanner connection

- Connect the barcode scanner direct to the RS-232 port on the VS-700.
- If the scanner requires an external power supply, make sure the proper power supply is well connected into the power socket of the scanner.



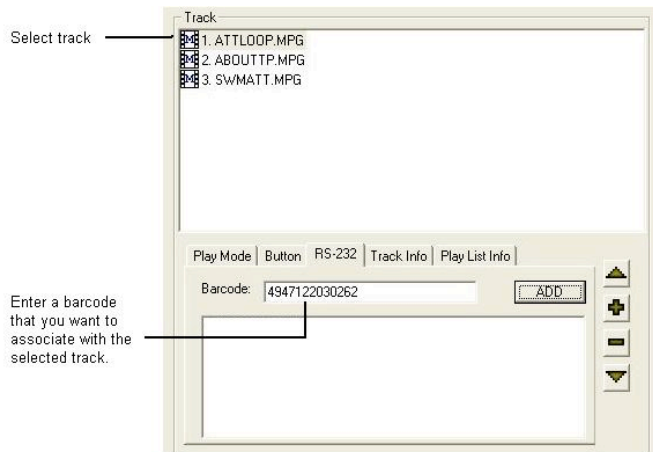
2.2 Setup barcode table (Barcode.ini)

This section describes how to use DV Studio Plus to create the barcode lookup table (Barcode.ini). The software requires version 1.4.023.03 or later. The barcode function applies to the ViewStream 300/500/700 that supports the RS-232 port.

In DV Studio, click the **RS-232** tab to open barcode input window.



Select a specific track, and then enter a barcode in the **Barcode** field. The code can be Alpha-numeric type, but the maximum character length cannot exceed 14 characters.



Add barcode item

Click **Add** to insert the barcode item in the table.



Delete barcode item

Select the barcode item that you want to delete. (Now the **Add** button will change to **Delete** button.)

Click **Delete** button to remove the barcode item.

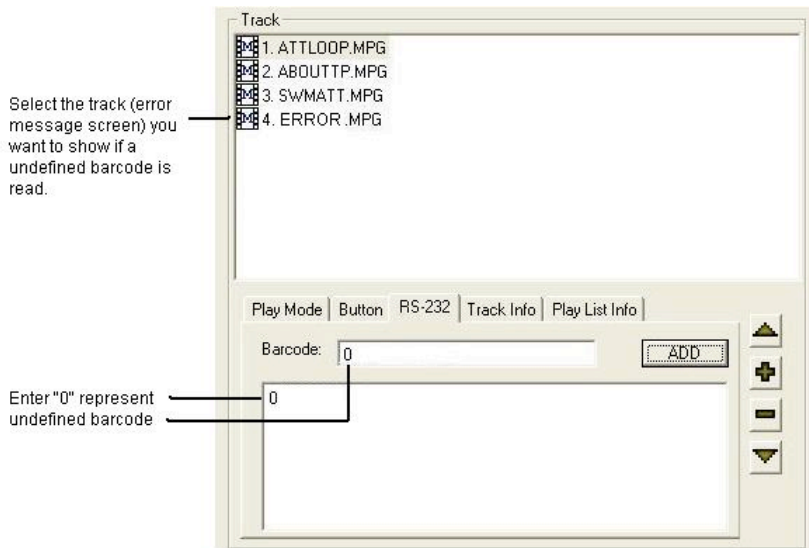


Barcode not found

If the scanned barcode was not found in the barcode table, you may want to define it to jump to an “Undefined Barcode Track”

Select the “Undefined Barcode Track” you want to show when the scanned barcode was not found. (e.g. ATTLOOP.MPG)

Enter “0” in the barcode field, then click **Add** to insert it in the table.



The above example will jump to the track (ATTLOOP.MPG) for any barcodes that were not found in the barcode table.

Barcode.ini

After you have defined all barcodes and tracks in DV Studio, a **Barcode.ini** file will be created. This is an editable text file and it is possible to modify for adding or deleting any barcode item later.

```
[Barcode]
BC1=2002072411119
BC2=2002072411126
BC3=2002072411133
BC4=2002072411140
BC5=2002072411157
BC6=2002072411164
BC7= 0
[2002072411119]
BC1 playlist=0
   track=3
[2002072411126]
BC2 playlist=0
   track=4
[2002072411133]
BC3 playlist=0
   track=5
[2002072411140]
BC4 playlist=0
   track=6
[2002072411157]
BC5 playlist=0
   track=7
[2002072411164]
BC6 playlist=0
   track=8
[0]
BC7 playlist=0
   track=9
```

Referring to the same playlist (the 1st playlist)

3 Copying files on the VS-700

This section explains how to copy all media content (.mpg, .JPG), playlist file (.pll) , project file (.prj) and barcode.ini on to the VS-700 through a USB memory stick.

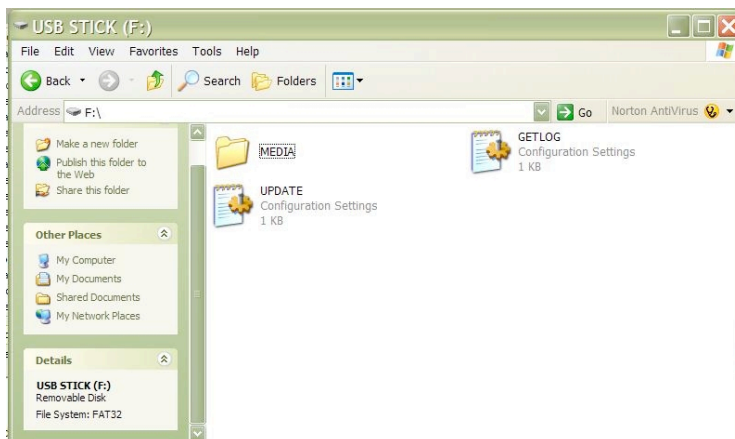
3.1 Preparation

USB Memory Stick

- Ensure the USB memory stick is formatted as FAT32 and no “Password control” files are installed on it.
- Create a new folder “MEDIA” on the USB memory stick.
- Create a text file named “UPDATE.INI” * on the root directory. Please refer to the **UPDATE.INI** section for details.



The USB update does not work without this update.ini file.

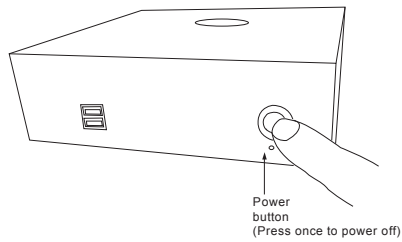


- Copy all media content (.mpg, .jpg etc.), playlist file (.pll), project file (.prj) and barcode.ini into the “MEDIA” folder. These files are now prepared for uploading to the ViewStream 700.

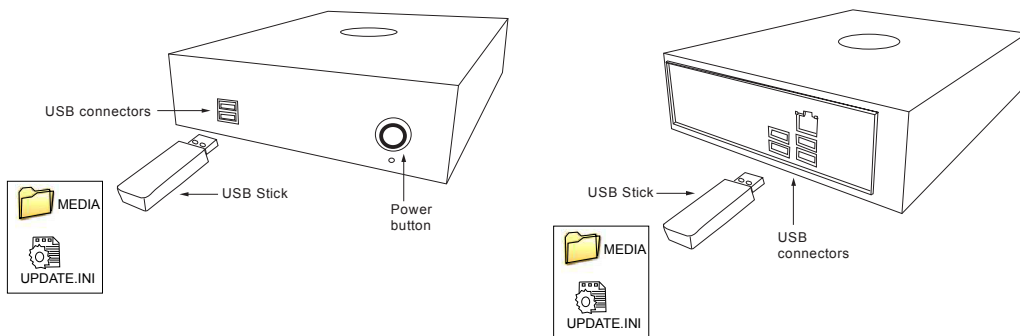
3.2 USB upload

Upload new media content

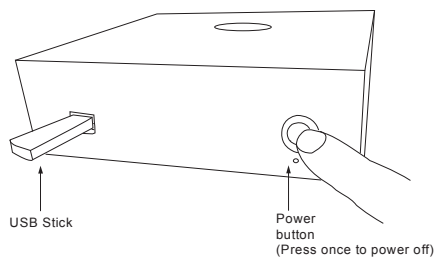
Step 1: Make sure the ViewStream 700 is powered off before inserting the USB memory stick.



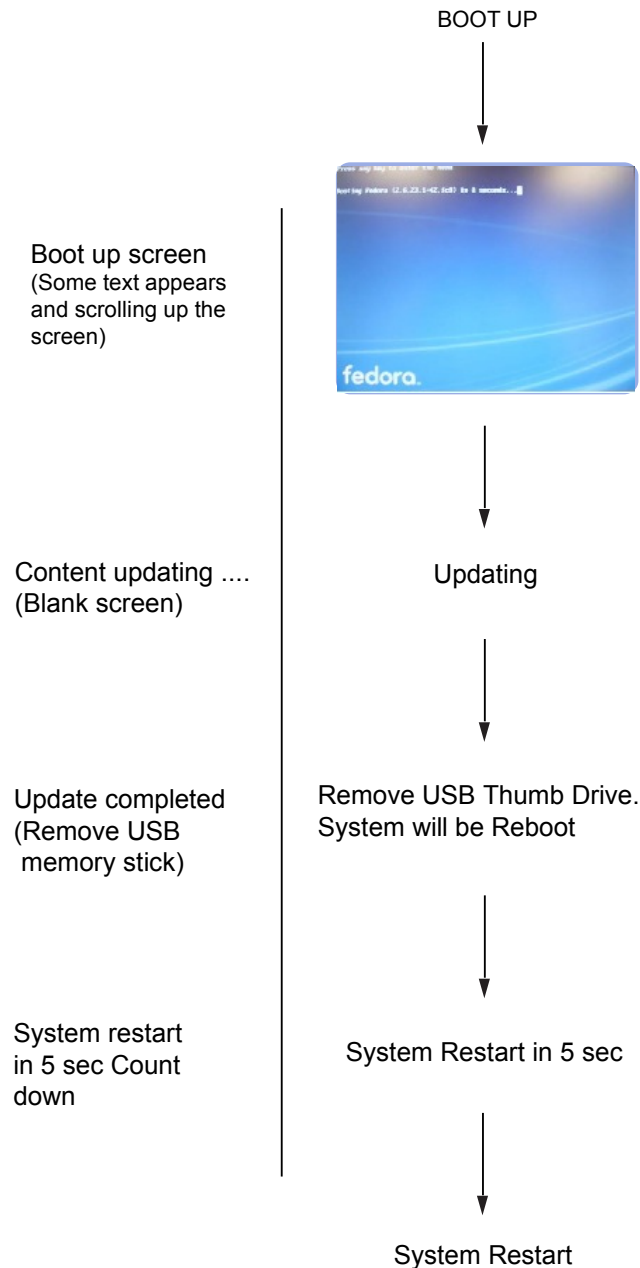
Step 2: Save "Barcode.ini" and your video content into the 'MEDIA' folder on the USB memory stick, and save the "update.ini" file to the root of the USB memory stick. Insert the USB memory stick in to the ViewStream 700.



Step 3: Power on the ViewStream 700.



When the files are being copied from USB memory stick to the ViewStream 700, a screen message will be shown as below:



Once the file copy procedure is completed, the following message will be shown:

Remove USB Thumb Drive. System will Reboot.

System will restart 5 seconds after the USB thumb drive has been removed.

3.3 UPDATE.INI

This is a text file to control the file transfer mechanism between the VS-700 player and the USB memory stick. This file must contain the description and options as shown in the example file below and placed in the root directory on the USB memory stick. This “Update.ini” file can be created manually or generated by a software tool “USBupdateX.XX.exe” (download “USB Host Update/Memory Stick Application....” from: www.dvsignage.com/support/tools-support)

Screen of “USBupdate1.01.exe”:



Note: This software tool requires Microsoft .NET Framework to execute. If your computer does not have the Microsoft .NET Framework installed. Please go to the <http://www.microsoft.com> to download and install the latest .NET Framework.

Follow the three options setting below for copying barcode.ini on VS-700:

[update]

USB host file update options:

1. Files present in both Player and USB flash drive

() Keep the files in Player unchanged
(*) Replace the files in Player by those in USB flash drive

2. Files present in Player only

(*) Keep the files in Player unchanged
() Delete the files

3. Files present in USB flash drive only

(*) Copy the files from USB flash drive to Player
() Do nothing

Files cannot be copied on the VS-700 without this update.ini file.

CONTACT DETAILS

USA: 18440 Technology Drive
Building 130
Morgan Hill, CA 95037
Tel: (1) 408-782 7773 **Fax:** (1) 408-782 7883
Sales: info@dvsignage.com

EUROPE: The Lake House,
Knebworth Park,
Hertfordshire, SG3 6PY
UK
Tel: +44 (0)20 7631 2150 **Fax:** +44 (0)20 7631 2156
Sales: info@dvsignage.com

ASIA: 16th floor Millennium City 3
370 Kwun Tong Road
Kwun Tong
Hong Kong
Tel: (852) 2861 3615 **Fax:** (852) 2520 2987
Sales: hk@dvsignage.com