

Application Note

Button Connection on ViewStream Player

(for VS-100 / VS-300 / VS-500 / VS-505) | Version 2.2

Table of Contents

| | | |
|----------|--------------------------------------|-----------|
| 1 | Introduction | 3 |
| 1.1 | What you need?..... | 3 |
| 2 | Button Connection..... | 4 |
| 2.2 | Connection with VS-300 | 5 |
| 2.2.3 | Connect 8-button with VS-300 | 5 |
| 2.3 | Connection with VS-505 | 6 |
| 2.4 | Connection with RM-DN5, VS-500 | 7 |
| 2.4.3 | Connect 8-button with VS-500 | 7 |
| 3 | Playlist configuration | 8 |
| 3.1 | Simple playback mode..... | 8 |
| 3.2 | Playlist mode | 9 |
| 3.2.1 | Playlist Creation | 9 |
| 4 | Pin Assignments | 12 |
| 4.1 | Button Circuit diagram | 12 |
| 4.2 | Switch and Button connector | 12 |

1 Introduction

This application note explains the use of buttons with the ViewStream media player. It also includes the button connection and playlist configuration using DV Studio.

1.1 What you need?

Before setup, please make sure have the following parts:

For ViewStream 100, 300, 500 & 505 (VS-100, VS-300, VS-500 & VS-505)

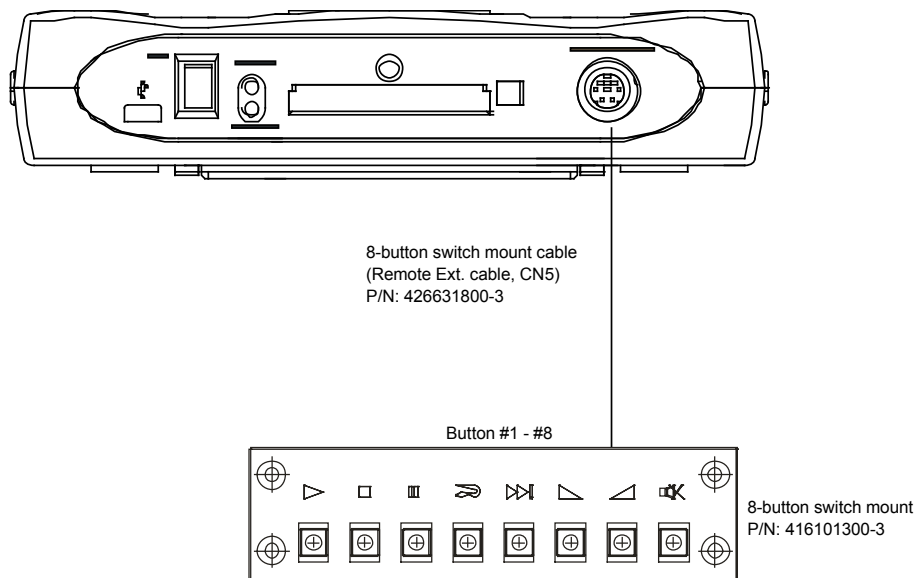
- VS-100, VS-300, VS-500, VS-505
- Remote extension cable (P/N 426631800-3)
- Switch mount board (P/N 416101300-3)

You can download DV Studio Software at www.dvsignage.com/using-dv-studio

2 Button Connection

2.1.2 Connect 8-button with VS-100

Use the switchmount (P/N:416101300-3) for 1-8 buttons when connected to the Remote Ext. socket (CN5) via the standard cable (P/N:426631800-3)

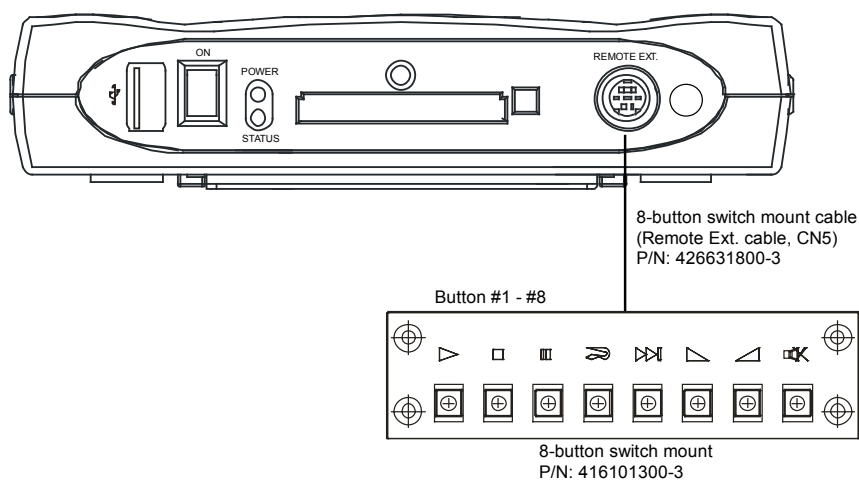


Important note: There is no additional button connector for #9 - #16 available on M3-100 and VS-100.

2.2 Connection with VS-300

2.2.3 Connect 8-button with VS-300

Use the switchmount (P/N:416101300-3) for 1-8 buttons when connected to the Remote Ext. socket (CN5) via the standard cable (P/N:426631800-3)

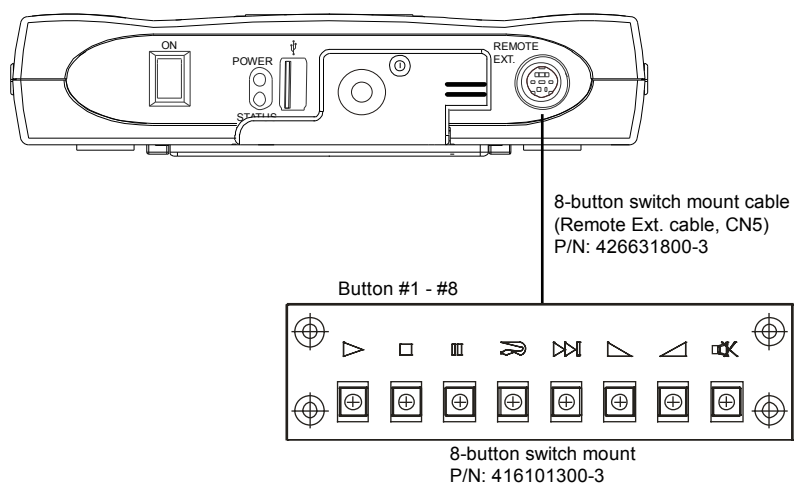


Important note: There is no additional button connector for #9 - #16 available on VS-300. However, it is possible to access button #9 - #16 on VS-300 but a custom-made housing design is required. Please contact your local DV Signage distributors for more details.

2.3 Connection with VS-505

2.3.3 Connect 8-button with VS-505

Use the switchmount (P/N:416101300-3) for 1-8 buttons when connected to the Remote Ext. socket (CN5) via the standard cable (P/N:426631800-3)

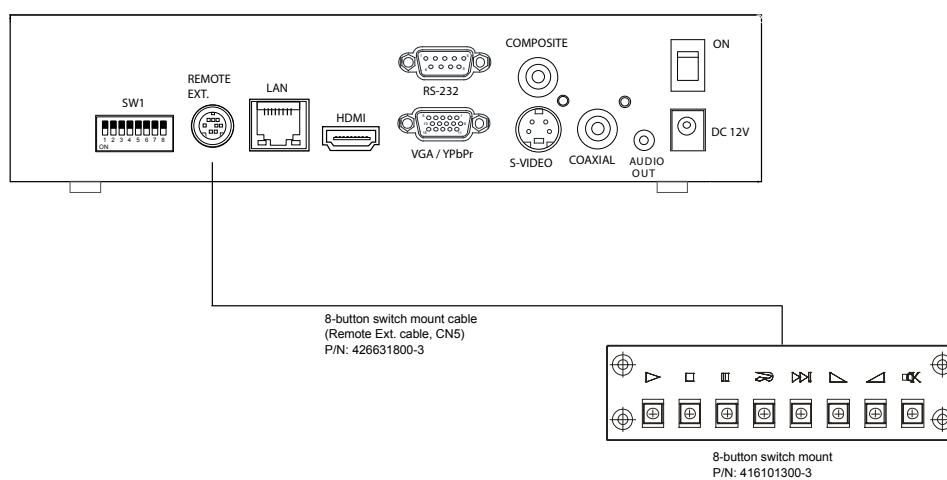


Important note: There is no additional button connector for #9 - #16 available on VS-505. However, it is possible to access button #9 - #16 on VS-505 but a custom-made housing design is required. Please contact your local DV Signage distributors for more details.

2.4 Connection with RM-DN5, VS-500

2.4.3 Connect 8-button with VS-500

- Use the switchmount (P/N:416101300-3) for 1-8 buttons when connected to the Remote Ext. socket (CN5) via the standard cable (P/N:426631800-3)



Important note: There is no additional button connector for #9 - #16 available on VS-500. However, it is possible to access button #9 - #16 on VS-500 but a custom-made housing design is required. Please contact your local DV Signage distributors for more details.

3 Playlist configuration

For whatever type of buttons are used including the ITO touch screen type, each button function can be programmed with **DV Studio** to perform a video player mode function or specific track select function.

The button control has two modes of operation - simple playback mode and playlist mode.

3.1 Simple playback mode

When using simple playback mode, the function of all buttons 1 to 8 has been preset.

The preset function for button (#1-#8) is:

| Button | #1 | #2 | #3 | #4 | #5 | #6 | #7 | #8 |
|----------|------|------|-------|--------|------|-------|-------|------|
| Function | Play | Stop | Pause | Repeat | Next | Vol - | Vol + | Mute |

Note: There are no functions for buttons 9-16 in simple playback mode.

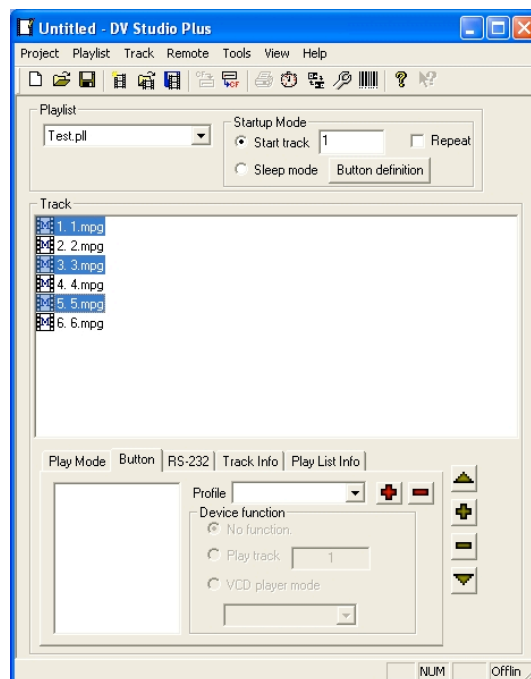
3.2 Playlist mode

In playlist mode both a playlist file (.pll) and project file (.prj) are required. These are created by DV Studio.

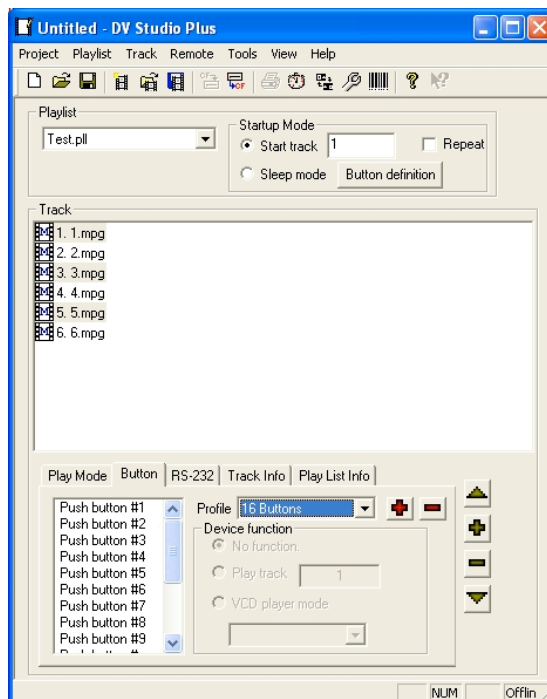
3.2.1 Playlist Creation

Step 1: After adding the playlist and inserting the content. Click “button” in the tab bar.

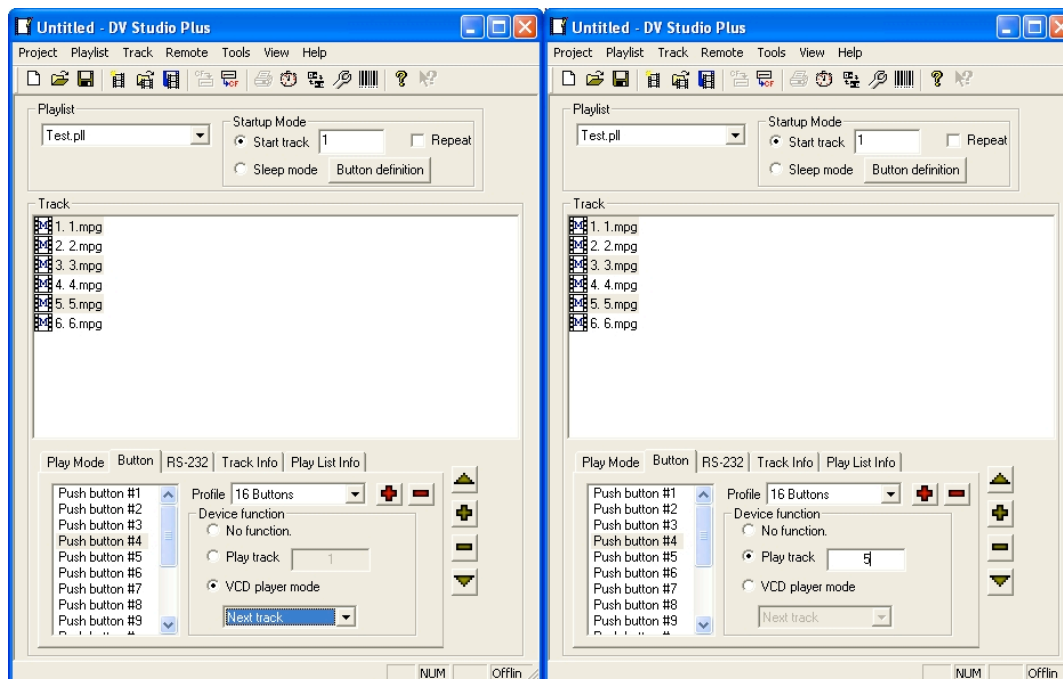
Step 2: Select the track(s) that you want to assign the button
(Button can be assigned to the track one by one or whole tracks selection.)



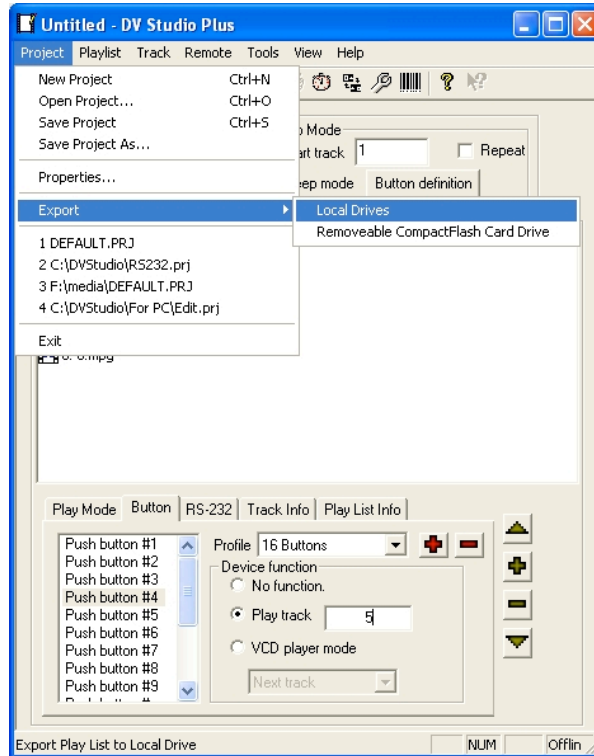
Step 3: Choose “8 buttons” or “16 buttons” in the Profile box.



Step 4: Assign the device function for each button.



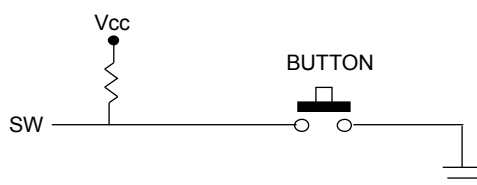
Step 5: After finishing all the required settings, then export the playlist.



4 Pin Assignments

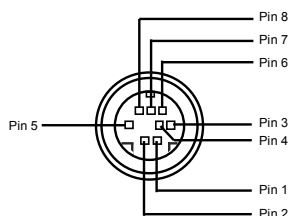
4.1 Button Circuit diagram

The following circuit diagram illustrates each button connection on CN3, CN5 and CN6.



4.2 Switch and Button connector

CN5 – Remote Ext. connector (#1 - #8)



| PIN | SYMBOL | DESCRIPTION |
|---|--------|-------------|
| 1 | SW1 | Button 1 |
| 2 | SW2 | Button 2 |
| 3 | SW3 | Button 3 |
| 4 | SW4 | Button 4 |
| 5 | SW5 | Button 5 |
| 6 | SW6 | Button 6 |
| 7 | SW7 | Button 7 |
| 8 | SW8 | Button 8 |
| The shielding of connector is grounded. | | |

CN6 - Switches and buttons connector (#1 - #8)

| PIN | SYMBOL | DESCRIPTION |
|------------|---------------|--------------------|
| 1 | SW1 | Button 1 |
| 2 | SW2 | Button 2 |
| 3 | SW3 | Button 3 |
| 4 | SW4 | Button 4 |
| 5 | SW5 | Button 5 |
| 6 | SW6 | Button 6 |
| 7 | SW7 | Button 7 |
| 8 | SW8 | Button 8 |
| 9 | GND | Ground |

CN3 - Switches and buttons connector (#9 - #16)

| PIN | SYMBOL | DESCRIPTION |
|------------|---------------|--------------------|
| 1 | SW9 | Button 9 |
| 2 | SW10 | Button 10 |
| 3 | SW11 | Button 11 |
| 4 | SW12 | Button 12 |
| 5 | SW13 | Button 13 |
| 6 | SW14 | Button 14 |
| 7 | SW15 | Button 15 |
| 8 | SW16 | Button 16 |
| 9 | GND | Ground |

CONTACT DETAILS

USA: 18440 Technology Drive
Building 130
Morgan Hill, CA 95037

Tel: (1) 408-782 7773
Sales: info@dvsignage.com

Fax: (1) 408-782 7883

EUROPE: The Lake House,
Knebworth Park,
Hertfordshire, SG3 6PY
UK

Tel: +44 (0)20 7631 2150
Sales: info@dvsignage.com

Fax: +44 (0)20 7631 2156

ASIA: 16th floor Millennium City 3
370 Kwun Tong Road
Kwun Tong
Hong Kong

Tel: (852) 2861 3615
Sales: hk@dvsignage.com

Fax: (852) 2520 2987

www.dvsignage.com

Specifications subject to change without notice

Application Note – Button Connection on ViewStream Player (October 2011) © DV Signage 2012