

Application Note **Schedule Play on VS-700**

Updated: Jan 11, 2011

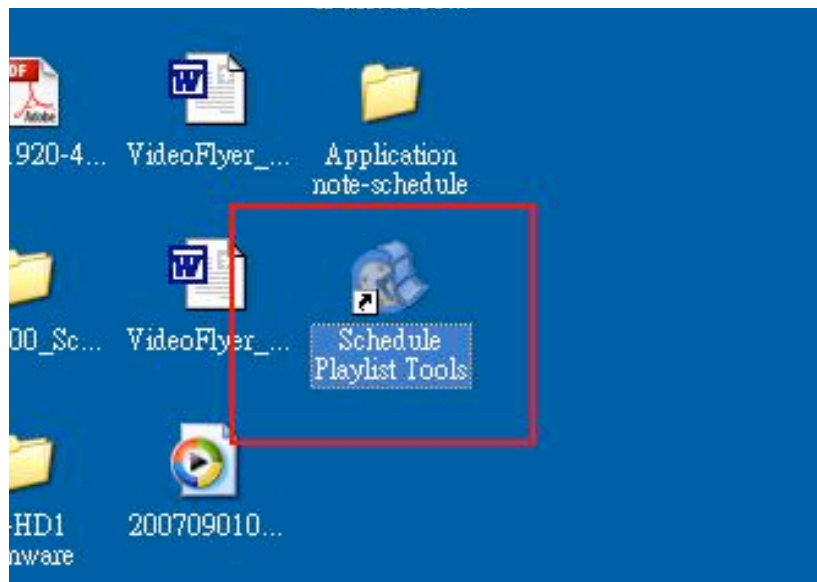
This brief guide is intent to explain the use of Schedule Playback on VS-700

1 Schedule setup

Create Playlist schedule :

Create the playlist file (.pll) using DV studio Plus. Then use **Schedule Playlist Tools** to schedule playlists.

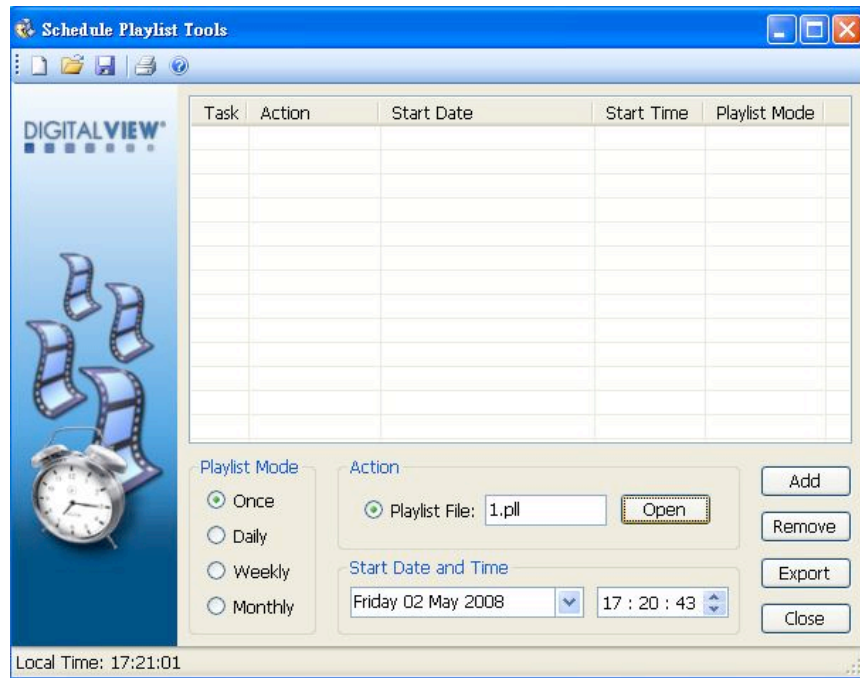
Step 1: Open the Schedule Playlist Tools



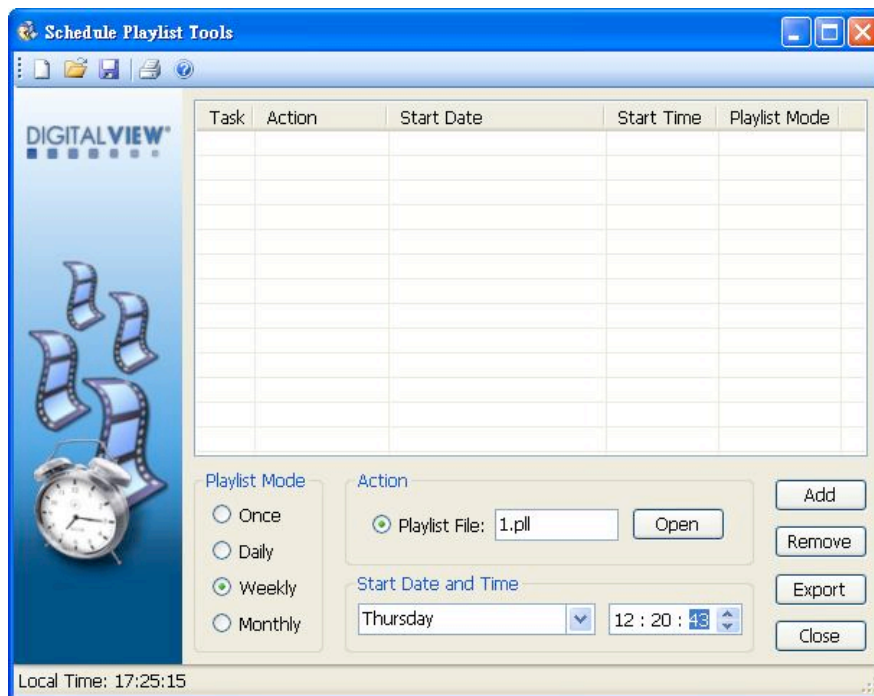
Note: This software tool requires Microsoft .NET Framework to execute. If your computer does not have the Microsoft .NET Framework installed. Please go to the <http://www.microsoft.com> to download and install the latest .NET Framework.

Step 2: Click **Open** to select the playlist.

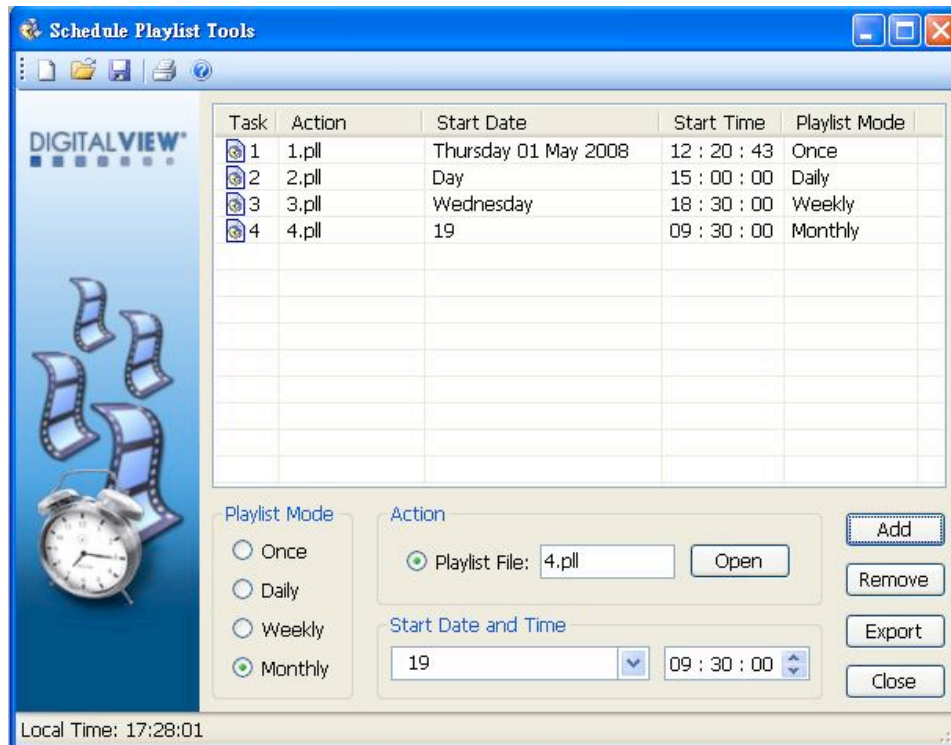
DV SIGNAGE™



Step 3: Choose one playlist mode (Once/Daily/Weekly/Monthly) and enter start date and time.



Step 4: A list of scheduled tasks will be shown in the windows. Press **Export** to confirm and export to a "Schedule.ini" file.



Schedule.ini

You can modify or edit the playlist schedule on “Schedule.ini” file directly.

Example 1 - Schedule playback :

```
[TASK1]
ACTION=1.pll
START_DATE=080501
START_TIME=122043
PARAMETER=O
```

```
[TASK2]
ACTION=2.pll
START_DATE=DLY
START_TIME=150000
PARAMETER=D
```

```
[TASK3]
ACTION=3.pll
START_DATE=WEDNESDAY
START_TIME=183000
PARAMETER=3
```

```
[TASK4]
ACTION=4.pll
START_DATE=MLY19
START_TIME=093000
PARAMETER=M19
```

How they work:

Task 1: Play a playlist “1.pll” once on May 1, 2008/12/1

DV SIGNAGE™

Task 2: Play a playlist “2.pll” daily starting on 3pm

Task 3: Play a playlist “3.pll” on 6:30pm on every Wednesday

Task 4: Play a playlist “4.pll” on 9:30am on 19th of every month.

Example 2 - Schedule display on/off :

Note: It requires to add a command “CMD:DISPLAY_ON” and “CMD:DISPLAY_OFF” into the ACTION= command line within schedule.ini file.

```
[TASK1]
ACTION=NEWPLL1.PLL
START_DATE=110113
START_TIME=122043
PARAMETER=O
```

```
[TASK2]
ACTION=CMD:DISPLAY_OFF
START_DATE=110113
START_TIME=150000
PARAMETER=O
```

```
[TASK3]
ACTION=CMD:DISPLAY_ON
START_DATE=110113
START_TIME=183000
PARAMETER=O
```

```
[TASK4]
ACTION=NEWPLL1.PLL
START_DATE=110113
START_TIME=183000
PARAMETER=O
```

How they work:

Task 1: Start the playlist “NEWPLL1.PLL” on Jan 13, 2011 12:20:43

Task 2: Stop video signal out and kill the current playlist “NEWPLL1.PLL” on Jan 13, 2011 15:00:00

Task 3: Resume Video signal from player on Jan 13, 2011 18:30:00

Task 4: Start a playlist “NEWPLL1.PLL” on Jan 13, 2011 18:30:00

DV SIGNAGE™

Below are the command line usages in schedule.ini

ACTION=	<p>[xxxxxxx.PLL]- Playlist file that to be scheduled</p> <p>[CMD:DISPLAY_OFF] – Kill the existing playlist and stop video signal out.</p> <p>[CMD:DISPLAY_ON] – Resume video signal out. (Need to start the playlist by new TASK.)</p>
START_DATE=	<p>Start date</p> <p>YYMMDD DLY (Daily mode) MLYxx (Monthly mode, where xx=day of month) MONDAY TUESDAY WEDNESDAY THURDAY FRIDAY SATURDAY SUNDAY</p>
START_TIME=	<p>Start time</p> <p>HHMMSS</p>
PARAMETER=	<p>Playlist mode</p> <p>O = Once – play on a specific date & time D = Daily 1 = Weekly (Monday) 2 = Weekly (Tuesday) 3 = Weekly (Wednesday) 4 = Weekly (Thursday) 5 = Weekly (Friday) 6 = Weekly (Saturday) 7 = Weekly (Sunday) Mx = Monthly, where x=day of month</p>

Note: The maximum number of schedule you can used is 40 (i.e. From [Task1] to [Task 40] can be used in Schedule.ini)

CONTACT DETAILS

USA: 18440 Technology Drive
Building 130
Morgan Hill, CA 95037

Tel: (1) 408-782 7773 **Fax:** (1) 408-782 7883
Sales: info@dvsignage.com

EUROPE: The Lake House,
Knebworth Park,
Hertfordshire, SG3 6PY
UK

Tel: +44 (0)20 7631 2150 **Fax:** +44 (0)20 7631 2156
Sales: info@dvsignage.com

ASIA: 16th floor Millennium City 3
370 Kwun Tong Road
Kwun Tong
Hong Kong

Tel: (852) 2861 3615 **Fax:** (852) 2520 2987
Sales: hk@dvsignage.com