

# **Application Note**

## **Schedule Playback on the ViewStream 300**

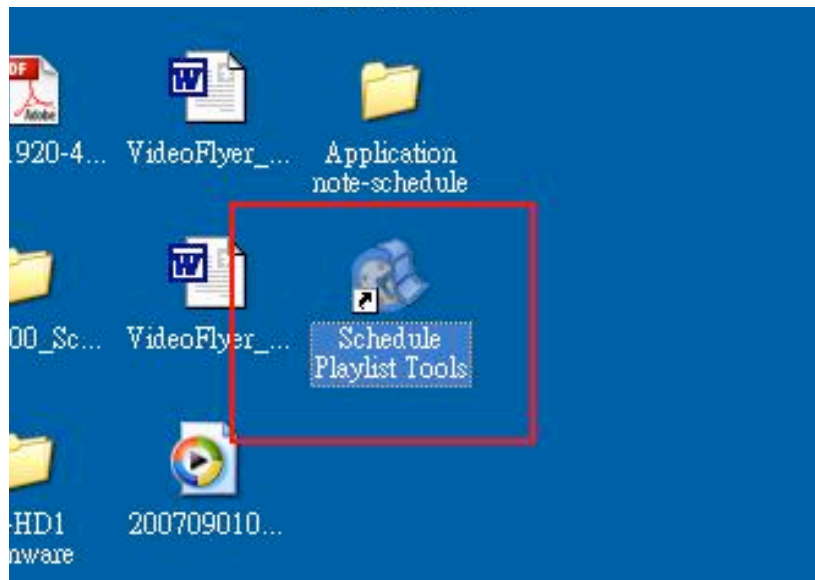
Version 2.2

## 1 Schedule setup

### **Create Playlist schedule :**

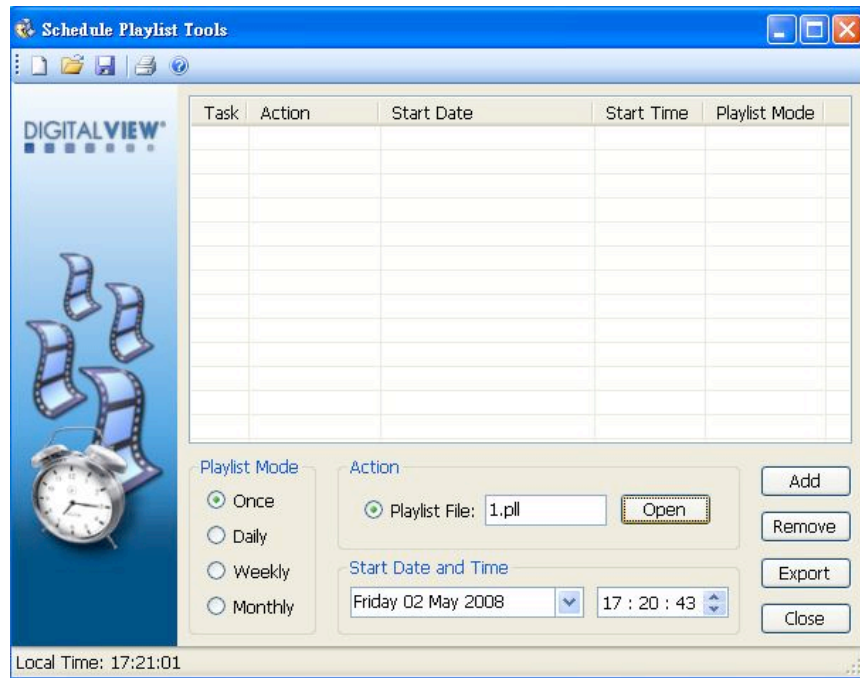
Create the playlist file (.pl) using DV Studio. Then use **Schedule Playlist Tools** to schedule playlists.

Step 1: Open the Schedule Playlist Tools

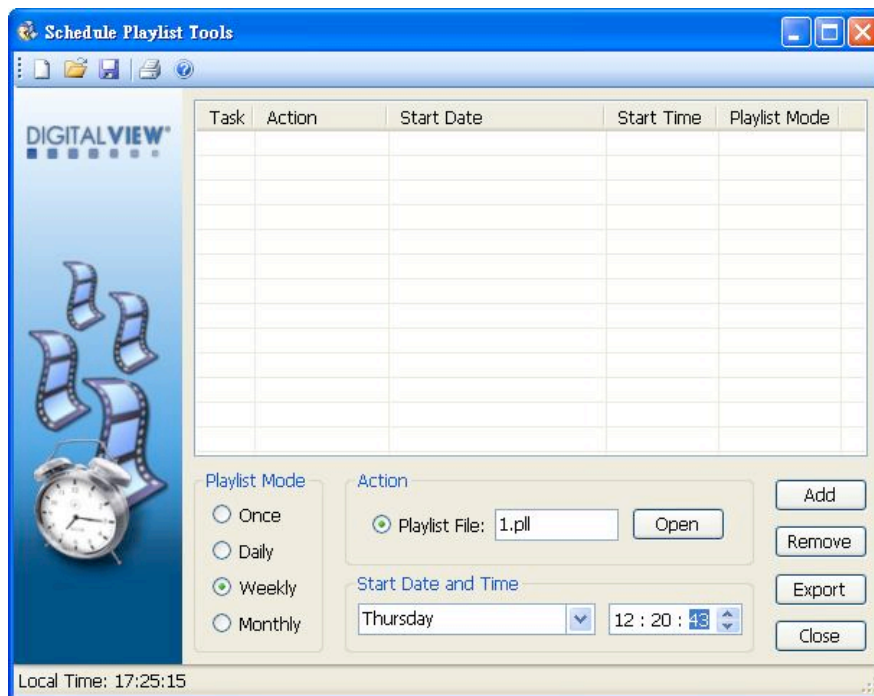


Note: This software tool requires Microsoft .NET Framework to execute. If your computer does not have the Microsoft .NET Framework installed. Please go to the <http://www.microsoft.com> to download and install the latest .NET Framework.

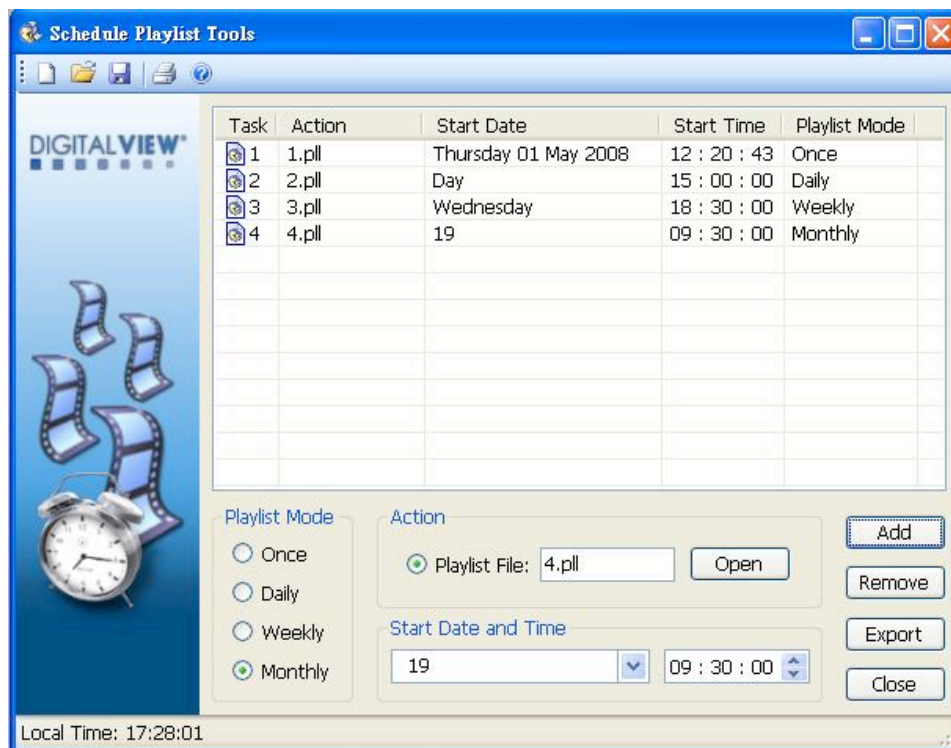
Step 2: Click **Open** to select the playlist.



Step 3: Choose one playlist mode (Once/Daily/Weekly/Monthly) and enter start date and time.



Step 4: A list of scheduled tasks will be shown in the windows. Press **Export** to confirm and export to a "Schedule.ini" file.



## ***Schedule.ini***

You can modify or edit the playlist schedule on “Schedule.ini” file directly. Below is the example of format:

```
[TASK1]  
ACTION=1.pll  
START_DATE=080501  
START_TIME=122043  
PARAMETER=O
```

```
[TASK2]  
ACTION=2.pll  
START_DATE=DLY  
START_TIME=150000  
PARAMETER=D
```

```
[TASK3]  
ACTION=3.pll  
START_DATE=WEDNESDAY  
START_TIME=183000  
PARAMETER=3
```

```
[TASK4]  
ACTION=4.pll  
START_DATE=MLY19  
START_TIME=093000  
PARAMETER=M19
```

ACTION=	Playlist file that to be scheduled
START_DATE=	Start date YYMMDD DLY (Daily mode) MLYxx (Monthly mode, where xx=day of month) MONDAY TUESDAY WEDNESDAY THURDAY FRIDAY SATURDAY SUNDAY
START_TIME=	Start time HHMMSS
PARAMETER=	Playlist mode O = Once – play on a specific date & time D = Daily 1 = Weekly (Monday) 2 = Weekly (Tuesday) 3 = Weekly (Wednesday) 4 = Weekly (Thursday) 5 = Weekly (Friday) 6 = Weekly (Saturday) 7 = Weekly (Sunday) Mx = Monthly, where x=day of month

Note: The maximum number of schedule you can used is 40 (i.e. From [Task1] to [Task 40] can be used in Schedule.ini)

## Contact Details

**USA:** 18440 Technology Drive  
Building 130  
Morgan Hill, CA 95037

**Tel:** (1) 408-782 7773      **Fax:** (1) 408-782 7883  
**Sales:** info@dvsignage.com

**EUROPE:** The Lake House,  
Knebworth Park,  
Hertfordshire, SG3 6PY  
UK

**Tel:** +44 (0)20 7631 2150      **Fax:** +44 (0)20 7631 2156  
**Sales:** info@dvsignage.com

**ASIA:** 16<sup>th</sup> floor Millennium City 3  
370 Kwun Tong Road  
Kwun Tong  
Hong Kong

**Tel:** (852) 2861 3615      **Fax:** (852) 2520 2987  
**Sales:** hk@dvsignage.com

**[www.dvsignage.com](http://www.dvsignage.com)**

All rights reserved: The concepts, designs, specifications and commands presented in this document are proprietary to DV Signage and are only made available for use with DV Signage products.

Specifications subject to change without notice